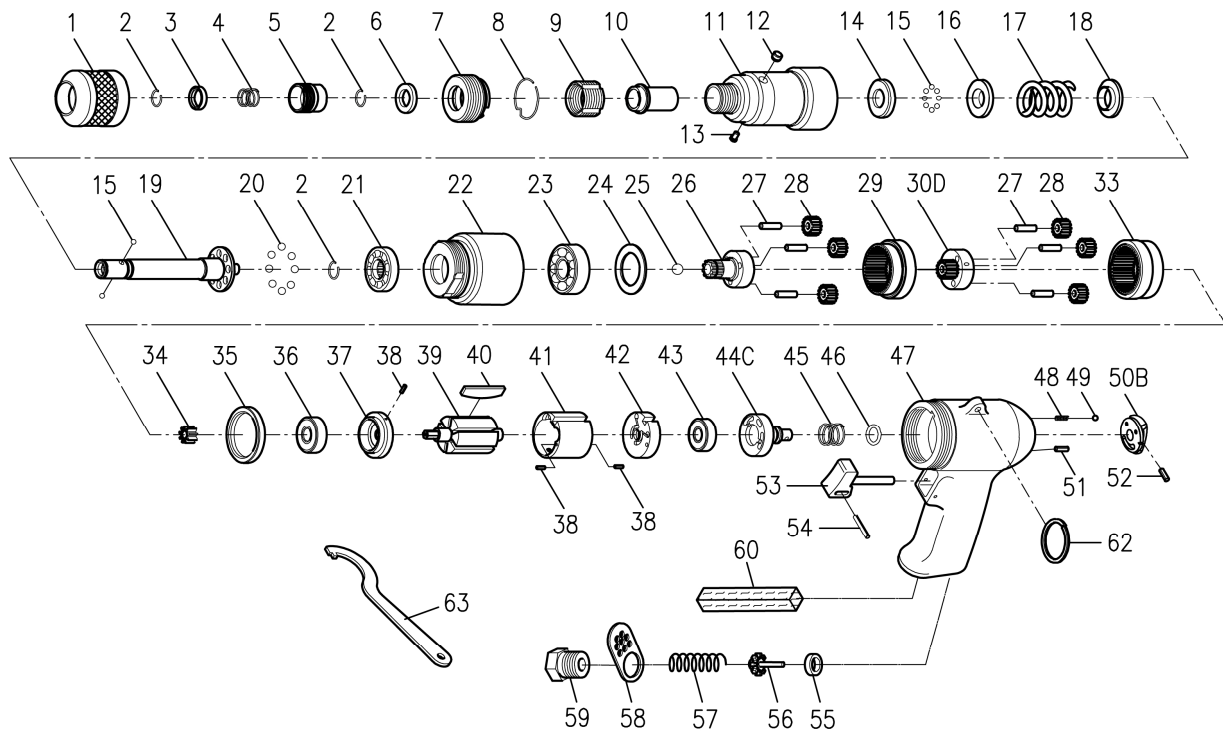


1/4" AIR SCREWDRIVER (External Adjustable Clutch)



Index No.	Part No.	Description	Q'ty	Index No.	Part No.	Description	Q'ty
1	766-022	Torque Adjuster	1	34	768-003	Rotor Gear	1
2	757-026	Anvil Collar	3	35	766-007	Spacer	1
3	757-025	Holder Spacer	1	36	00-2331	Ball Bearing	1
4	757-027	Spring	1	37	757-005	Front End Plate	1
5	757-024	Quick Change Holder	1	38	00-3325	Spring Pin	3
6	757-023	Washer	1	39	768-002	Rotor	1
7	766-019	Adjusting Screw	1	40	757-008	Rotor Blade	6
8	766-021	Snap Ring	1	41	757-006	Cylinder	1
9	766-004	Thread Fixer	1	42	757-009	Rear End Plate	1
10	766-020	Bushing	1	43	00-2332	Ball Bearing	1
11	766-003	Front Housing	1	44C	611R-019	Reverse Valve	1
12	766-005	Ring	1	45	767-020	Spring	1
13	00-4603	Grease Fitting	1	46	00-4118	O-Ring	1
14	766-017	Washer	1	47	766-001	Motor Housing	1
15	00-3813	Steel Ball	18	48	301-034	Spring	1
16	766-015	Washer	1	49	00-3805	Steel Ball	1
17	766-016	Spring	1	50B	611R-021	Reverse Valve Knob	1
18	766-014	Washer	1	51	00-3304	Spring Pin	1
19	766-011CH	Anvil	1	52	00-3303	Spring Pin	1
20	00-3811	Steel Ball	8	53	306-025	Trigger	1
21	768-010	Clutch Plate	1	54	00-3326	Spring Pin	1
22	768-001	Housing Cover	1	55	305C-022	Bushing	1
23	00-2306	Ball Bearing	1	56	305C-021	Valve Stem	1
24	766-018	Washer	1	57	767-028	Spring	1
25	00-3819	Steel Ball	1	58	767-026	Exhaust Deflector	1
26	768-008	Gear Cage B	1	59	767-023A	Air Inlet (1/4" PF)	1
27	00-3415	Pin	6		767-023B	Air Inlet (1/4" PT)	
28	768-005	Idler Gear	6		767-023C	Air Inlet (1/4" NPT)	
29	768-009	Idler Gear Housing B	1	60	767-027	Muffler	1
30D	768-011@	Gear A Unit	1	62	767-022	Hanger	1
33	768-004	Idler Gear Housing A	1	63	766-024	Wrench	1

Remark : Please do use the correct bit as recommended size in order to extend the life of tool.

