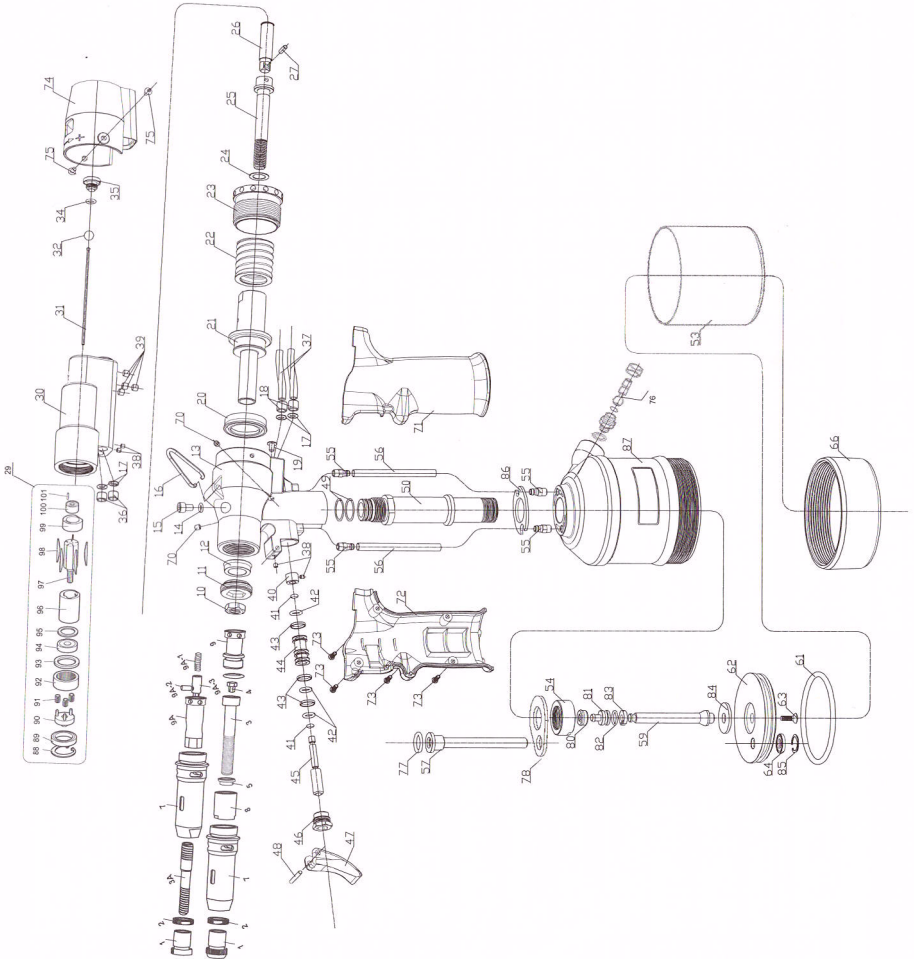


EXPLODED DRAWING



PARTS LIST OF 800

ITEM	PARTNO	名称	DESCRIPTION	QTY	ITEM	PARTNO	名称	DESCRIPTION	QTY	ITEM	PARTNO	名称	DESCRIPTION	QTY
1	80001	枪嘴	NOSE TIP-OF NOSE ASSEMBLY	1	30	80030	气动马达芯	AIR MOTOR CASING	1	73	80073	自攻螺	SCREW	4
2	80002	封帽	LOCK NUT OF NOSE ASSEMBLY	1	31	80031	推杆	PUSHING ROD	1	74	80074	主体后盖	END COVER	1
3	8003	拉杆	SCREW OF NOSE ASSEMBLY	1	32	80032	球	BALL	1	75	80075	封帽	SOCKET SCREW	2
3A	80003A	拉杆	QUICK SCREW	1	34	80034	O型圈	O RING	1	76	80076	气接	AIR INLET ASSEMBLY	4
4	80004	六角接头	HEXAGON SHAFT	1	35	80035	正转弹簧螺栓	SPRING SCREW	1	77	80077	O型圈	O RING	1
5	80005	垫片	LOCK RING	1	36	80036	O型圈挡圈 B	CLAMPING RING B	2	78	80078	板	PLATE	1
6	80006	O型圈	O RING	1	37	80037	气管	AIR TUBE	2	80	80080	U型封	U SEAL	1
7	80007	枪头外套	NOSE CASING	1	38	80038	M 3 机床螺丝	M 3 STOP SCREW	4	81	80081	油管	HYDRAULIC TUBE	1
8	80008	螺母螺母	ADAPTOR NUT(UP TO M10)	1	39	80039	M 5 机床螺丝	M 5 STOP SCREW	4	82	80082	O型圈	O RING	1
9	80009	连接轴	SPINDLE	1	40	80040	芯定位	REVERSING PLUG	1	83	80083	柱套环	PNEUMATIC PISTON RING	1
9A	80009A	连接轴	SPINDLE	1	41	80041	O型圈	O RING	2	84	80084	柱套杆垫片	PNEUMATIC PISTON WASHER	1
9A-1	80009A-1	弹簧	SPRING	1	42	80042	O型圈	O RING	3	85	80085	挡圈	CIRCLIP	1
9A-2	80009A-2	销子	PIN	1	43	80043	碳纤	CARBON FIBER RING	3	86	80086	消音垫片	HYDRAULIC CYLINDER WASHER	1
9A-3	80009A-3	六角连接器	HEXAGON CONNECTOR	1	44	80044	芯	REVERSE VALVE	1	87	80087	气盖外壳	CYLINDER COVER	1
10	80010	定位螺母	LOCK NUT	1	45	80045	螺母	REVERSE VALVE ROD	1	88	80088	止推环	CIRCLIP OF MOTOR	1
11	80011	液压油封套	HYDRAULIC CYLINDER SCREW	1	46	80046	螺母	REVERSE VALVE NUT	1	89	80089	轴承	BEARING OF MOTOR	1
12	80012	U型封	U SEAL	1	47	80047	扳机	TRIGGER	1	90	80090	行星轴	PLANET GEAR SPINDLE OF MOTOR	1
13	80013	油缸	HYDRAULIC CYLINDER	1	48	80048	扳机定位	TRIGGER PIN	1	91	80091	行星齿轮	PLANET GEAR OF MOTOR	3
14	80014	O型圈	OIL PLUG WASHER	1	49	80049	O型圈	O RING	2	92	80092	行星内齿轮	SPACER OF MOTOR	1
15	80015	封帽螺栓	OIL PLUG	1	50	80050	油管	HYDRAULIC SLEEVE	1	93	80093	衬套	BEARING OF MOTOR	1
16	80016	托物	HOOK	1	53	80053	气缸	AIR CYLINDER	1	94	80094	轴承	BEARING OF MOTOR	1
17	80017	O型圈	O RING	1	54	80054	螺母	LOOK NUT	1	95	80095	扇形衬套	FRONT END PLATE OF MOTOR	1
18	80018	O型圈(气圈) A	CLAMPING RING A	2	55	80055	M 6 气筒接头	M 6 AIR TUBE COLLECTOR	4	96	80096	风动马达定子	STATOR OF MOTOR	1
19	80019	圆丝螺	SCREW	1	56	80056	气筒	AIR TUBE	2	97	80097	风动马达转子	ROTOR OF MOTOR	1
20	80020	U型封	U SEAL	1	57	80057	气筒	AIR MOVEMENT TUBE	1	98	80098	扇形平台	ROTOR BLADE OF MOTOR	5
21	80021	主轴	HYDRAULIC PISTON	1	59	80059	柱套环上	PNEUMATIC PISTON ROD	1	99	80099	轴承	READ END PLATE OF MOTOR	1
22	80022	主弹簧	SPRING	1	61	80061	O型圈	O RING	1	100	80100	轴套	BEARING OF MOTOR	1
23	80023	调压密封盖	STROKE SETTING CAP	1	62	80062	活塞杆	PNEUMATIC PISTON	1	101	80101	销子	PIN	1
24	80024	拉杆垫片	WASHER	1	63	80063	六角螺	HEXAGON SCREW	1					
25	80025	旋转拉杆	MOVEMENT PIVOT	1	64	80064	密封圈	SEAL RING	1					
26	80026	旋转拉杆	MOVEMENT CONNECTOR	1	66	80066	底座	RUBBER BASE	1					
27	80027	弹性销	SPRING PIN	1	70	80070	M 4 机床螺	M 4 SCREW	2					
28	80028	端盖	END CAP	1	71	80071	手柄-右	RIGHT NYLON HANDLE	1					
29	80029	风动马达组	PNEUMATIC MOTOR ASSEMBLY	1	72	80072	手柄-左	LEFT NYLON HANDLE	1					