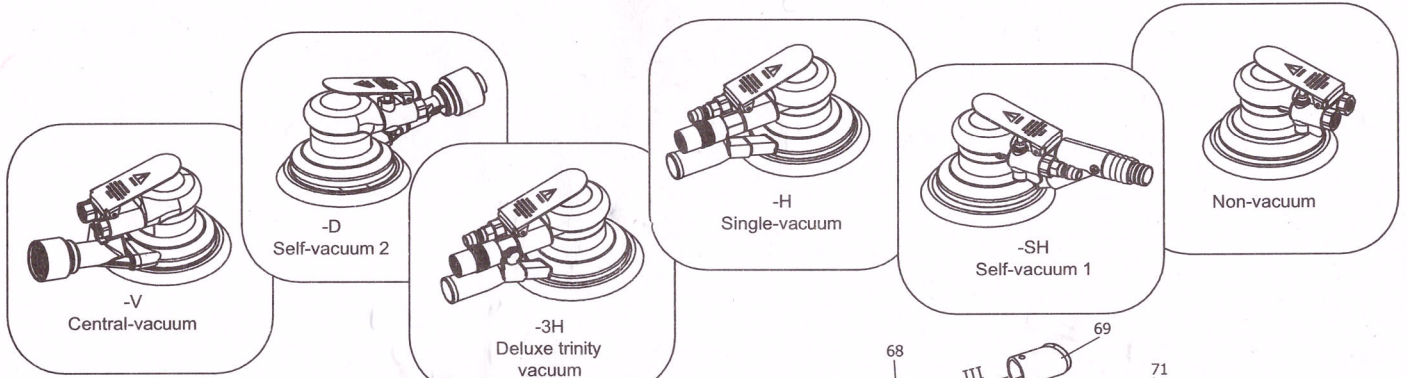
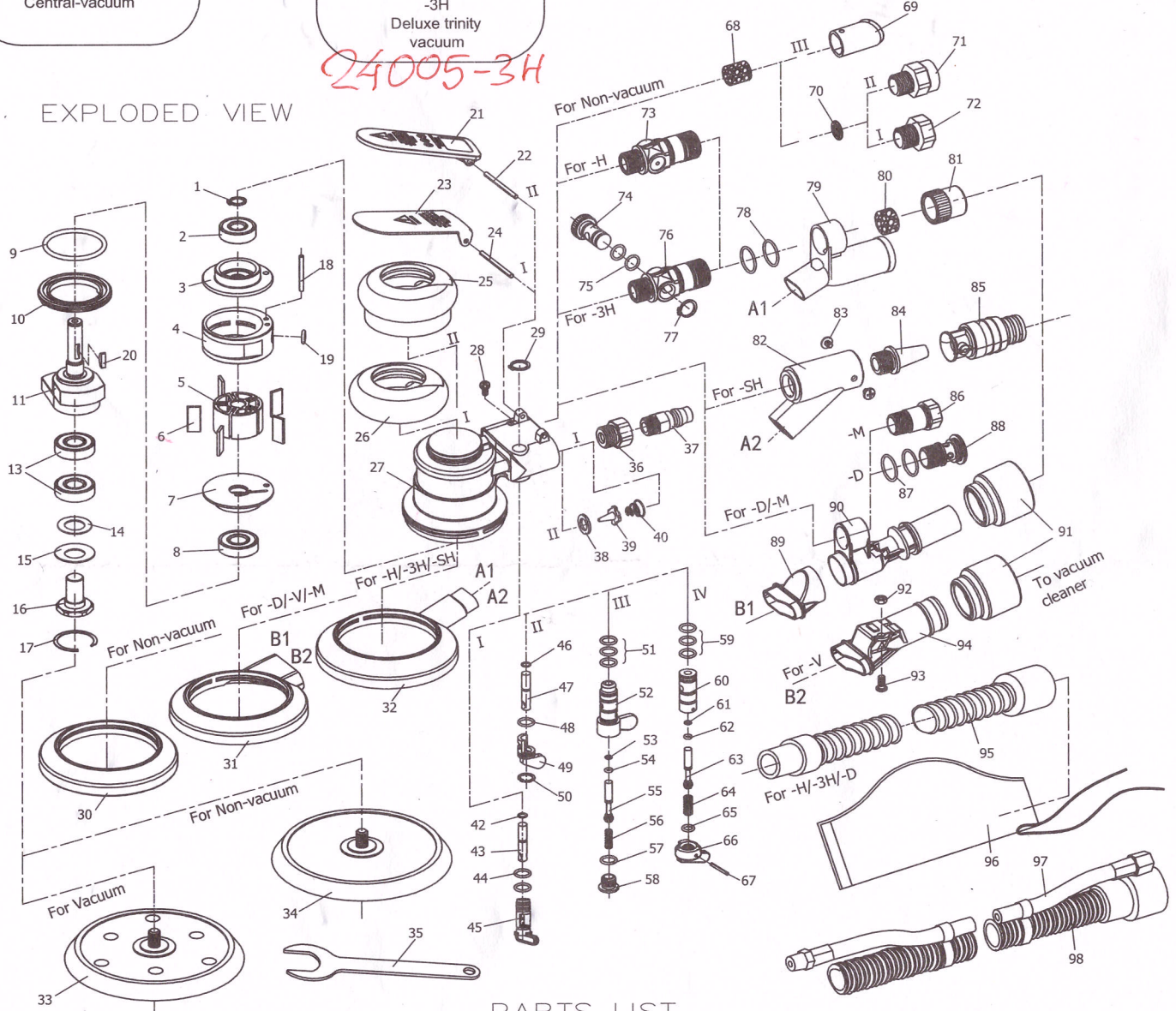


# Random Orbital Sander



24005-3H

## EXPLODED VIEW



## PARTS LIST

No.	Description	Q'ty	No.	Description	Q'ty	No.	Description	Q'ty	No.	Description	Q'ty	No.	Description	Q'ty
1	retaining ring (Φ10)	1	21	Class A trigger	1	41	***	*	61	o-ring (Φ2.5x1.5)	1	81	internal thread muffler	1
2	bearing (6000z)	1	22	spring pin (Φ3x36)	1	42	o-ring (Φ3x1)	1	62	o-ring (Φ4x1)	1	82	SH type air exhaust	1
3	front plate	1	23	Class B trigger	1	43	plastic valve pin	1	63	copper throttle lever	1	83	self-tapping screw	2
4	cylinder	1	24	spring pin (Φ3x41)	1	44	o-ring (Φ9x1.5)	2	64	spring	1	84	nozzle	1
5	rotor	1	25	Class A grip	1	45	plastic throttle lever	1	65	o-ring (Φ6x1.5)	1	85	ejector	1
6	blade	5	26	Class B grip	1	46	o-ring (Φ3x1)	1	66	hand shank	1	86	adapting piece	1
7	rear plate	1	27	body	1	47	plastic valve pin	1	67	spring pin (Φ2x18)	1	87	o-ring (Φ14x1.5)	2
8	bearing (6001z)	1	28	round head screw	1	48	o-ring (Φ9x1.5)	1	68	muffler core	1	88	guidedvane	1
9	o-ring (Φ38.8x3.1)	1	29	retaining ring (Φ12)	1	49	plastic throttle lever	1	69	Inclined exhaust muffler	1	89	adapter	1
10	lock ring	1	30	shroud	1	50	holering circlips (Φ12)	1	70	muffler plate	1	90	self-vac.exhaust	1
11	shaft balancer	1	31	vacuum shroud (1)	1	51	o-ring (Φ9x1.5)	3	71	embedded muffler	1	91	screw fitting	1
12	***	*	32	vacuum shroud (2)	1	52	metal throttle lever	1	72	mini muffler	1	92	Hex. nut (M5)	1
13	bearing (6001z)	2	33	Non-vacuum pad	1	53	o-ring (Φ2.5x1.5)	1	73	connect case	1	93	screw (M5x8)	1
14	felt ring	1	34	Vacuum pad	1	54	o-ring (Φ4x1)	1	74	transfer switch	1	94	Center-vac.exhaust	1
15	dustproof cover	1	35	spanner	1	55	copper valve pin	1	75	o-ring (Φ9x1.5)	2	95	dust pipe	1
16	spindle	1	36	air inlet bushing	1	56	spring	1	76	change valve	1	96	dust bag	1
17	clip ring	1	37	quick coupler	1	57	o-ring (Φ8x1.8)	1	77	retaining ring (Φ12)	1	97	air inlet pipe	* 1
18	lock pin (Φ3x28)	1	38	rubber pad	1	58	valve cover	1	78	o-ring (Φ17x1.5)	2	98	Center-vac.pipe	* 1
19	o-ring (Φ6.7x1.8)	1	39	valve	1	59	o-ring (Φ9x1.5)	3	79	3H type air exhaust	1			
20	half-round shaft	1	40	taper spring	1	60	copper throttle lever	1	80	muffler core	1			